

Magnetic Retractable



The Magnetic Retractable Banner offers the ultimate flexibility, create an instant display wall for exhibitions and event advertising to suit your space. Simply join 2, 3, 4 or more units side by side to create a portable and affordable display that is so simple to assemble. Create a graphic or logo wall with ease, the top magnets simply click together to make the wall.

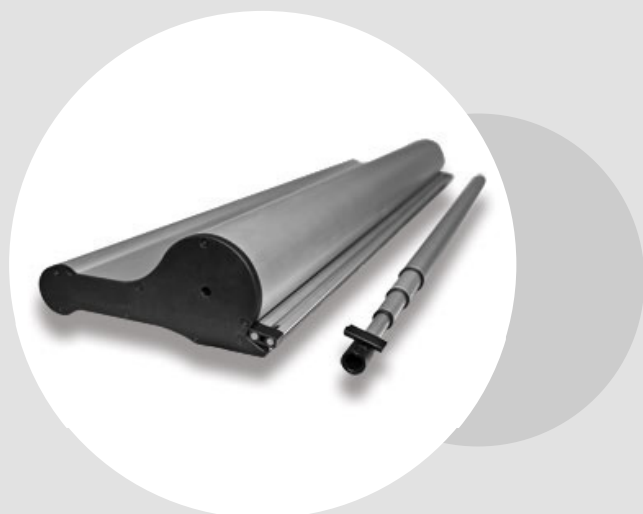
Added bonus they can be adjusted to any required height between 84cm up to 2.3m.



Create the illusion of a wall in minutes

Available in

Standard size -  84cm -2.3m (Adjustable)  85cm



Constructed with a solid base for a more durable and compact unit.

BANNER



One Image printed over multiple banners
"create an illusion"

An easy & affordable option
for exhibition displays!



Each unit is supplied with a portable custom made padded carry bag.

Connect as many banners as you like and pull up the wall effect in minutes. We can turn your artwork assets into a masterpiece.

**double
impact
displays**

www.doubleimpact.com.au

P. (02) 9999 1322 F. (02) 9999 1955